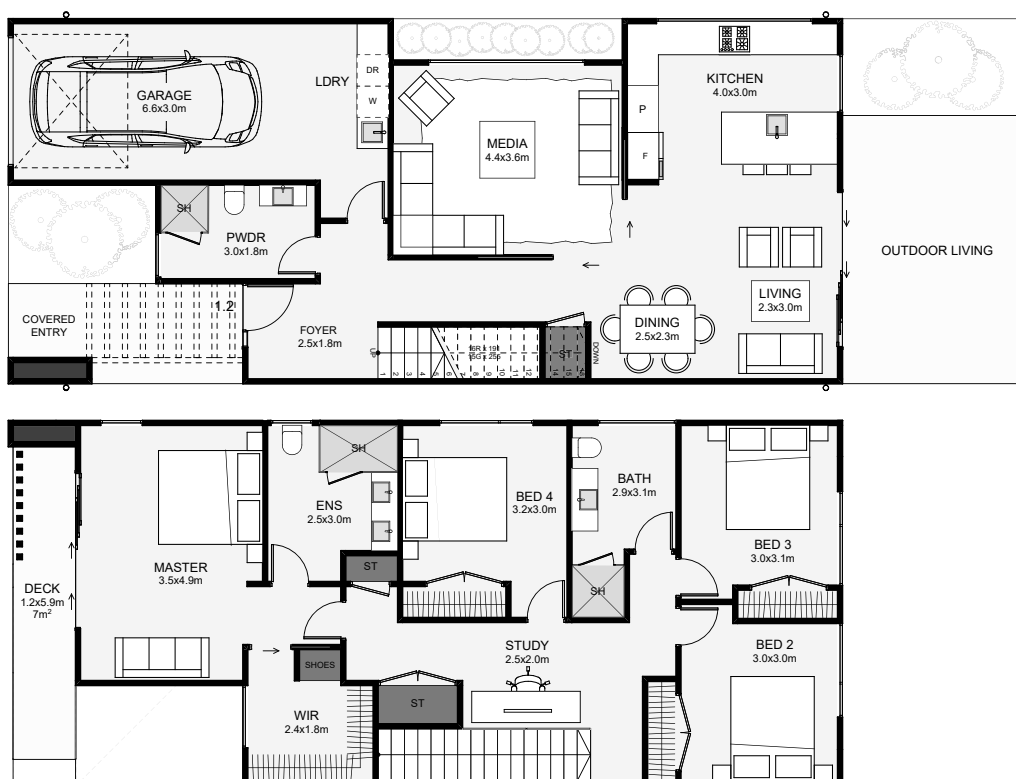




This ultra-modern, four-bedroom townhouse is designed to feel more like a family home. Downstairs, there's dual living, both accessible to the kitchen and a private powder room. Upstairs, is an open study, four bedrooms and two bathrooms. The master enjoys a large walk-in wardrobe, an ensuite and access to a long balcony that will impress! This townhouse has all the design boxes ticked for anyone with modern taste!



Floor Area: 188m<sup>2</sup>

1 car 4 beds 2.5 baths 2 living areas 18.0m x 7.0m

Contact us

Ph: 0459 709 231

E: mark@aspiringhomes.com.au

www.aspiringhomes.com.au

Aspiring  
HOMES